

# 08 SPIRIT





**SMARTSPACE**  
WEB

### LET THE SPIRIT MOVE YOU.

Feed your appetite for fun and adventure with a 2008 Itasca Spirit®. Three models let you choose the motor home that is perfect for your traveling family. Every floorplan takes advantage of our SmartSpace™ design philosophy that uses innovative features to make the most of the available interior space. You'll also notice contemporary fabrics and curved cabinetry in your choice of Honey

Cherry or Washed Maple. A full-featured galley with an easy-to-clean vinyl floor makes getaways a pleasure, while luxuries such as an available entertainment center and a standard queen-size bed can make travel even more fun. Choose the Itasca Spirit and make plans for adventure.

## ALL ARE WELCOME

The Itasca Spirit makes you feel right at home. You'll be greeted by contemporary fabrics, pewter hardware and your choice of Honey Cherry or Washed Maple finishes on the curved cabinet doors. Choose between the overhead bunk and an available front entertainment center with a 27" Sony® TV and decorative rope lighting.

You can add the Interior Upgrade Package for enhanced amenities such as day/night pleated blinds, a Titanium Touch™ stainless refrigerator insert, dashboard appliqué, sink covers, additional rope accent lighting and more. The Titanium Touch stainless refrigerator façade resists fingerprints, is warm to the touch and even holds your favorite kitchen magnets.

The galley comes standard with an Apollo® range/microwave/convection oven for all your cooking needs. You'll also enjoy crisp, clear water when you select the water filtration system.

A single, digital, wall-mounted thermostat controls both the furnace and ceiling-ducted air conditioning for total climate control. A heat pump can also be added to provide heat on cool mornings without starting the furnace.

**WEB** Select a Key Feature

The **WEB** icon designates a Winnebago Industries Key Feature. For further in-depth information and photos, use the Drop-down Menu or click on the 'Key Features' page at [winnebagoind.com](http://winnebagoind.com).

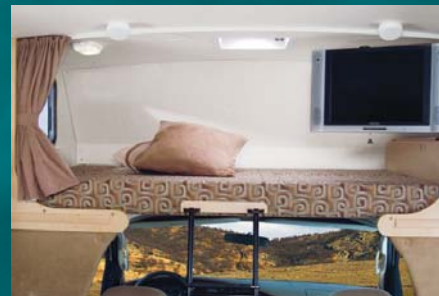


31 Boardwalk with Washed Maple

**FRONT ENTERTAINMENT CENTER** Love movies? Add the entertainment center. It includes the Home Theater Sound System with receiver, amplifier, DVD player, five surround-sound speakers and a subwoofer for a total movie watching experience.



**GALLEY** The 3-in-1 range/microwave/convection oven by Apollo features a stainless steel cooktop with three high-output sealed burners and a convection oven that cooks and browns like a conventional oven in half the time.



**OVERHEAD BUNK** Add a 19" LCD TV that conveniently tucks away and a built-in stereo system with AM/FM radio, CD/DVD player, alarm clock, MP3 input and a headphone jack.



**BEDROOM** Each model offers a private bedroom with a queen-size bed and a mirrored wardrobe.

## BRING MORE GEAR

Packing is easy in the Spirit, thanks to Smart Storage.™ It ensures every inch of the available storage space is maximized for efficiency. It also provides unique storage capacities, like a storage bin on the 31C and 31H that can accommodate wet gear and can even keep your beverages cool. These models also have a large compartment that can be accessed from inside and outside the motor home.

Driving the Spirit has a very automotive feel. Enhancements such as the available LCD rearview monitor make it even easier to drive. The RV Radio® (Ford® chassis only) includes a CD player, weather band and an auxiliary input for your MP3 player. Upgrade the RV Radio with Sirius® Satellite radio for crystal-clear programming across the U.S. (Ford chassis only). The Sirius Satellite radio package includes an iPod-compatible cable connector so you can listen to and control your iPod through the dash stereo.

**WEB** **SIRIUS** **RV•RADIO**



**WEB** **STOREMORE** Winnebago Industries® pioneered the StoreMore slideout system to make storage more accessible. It allows the storage bays on the 31C and 31H to extend with the slideroom, letting you load and unload without crawling on your hands and knees.



**WEB** **SMART STORAGE** A unique rear storage compartment and a side storage bin are part of the Smart Storage design of the 31C and 31H. The storage bin cover converts into a table with folding legs.



**CAB SEATS**  
The available UltraLeather™ makes every trip even more enjoyable.



**EXTERIOR ENTERTAINMENT CENTER** Includes AM/FM stereo, CD player, 12-volt DC receptacle, TV jack, 110-volt outlet, two speakers and a removable TV table.

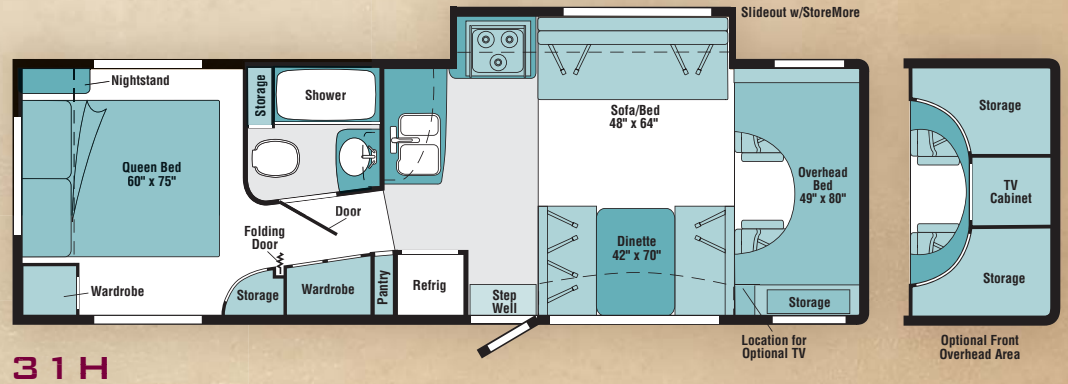
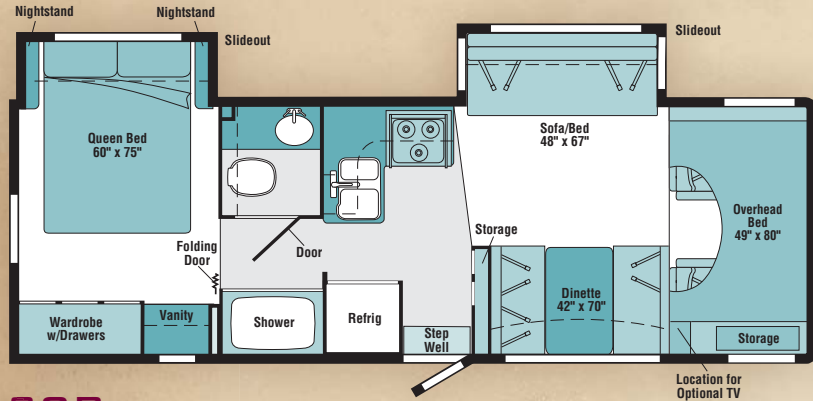
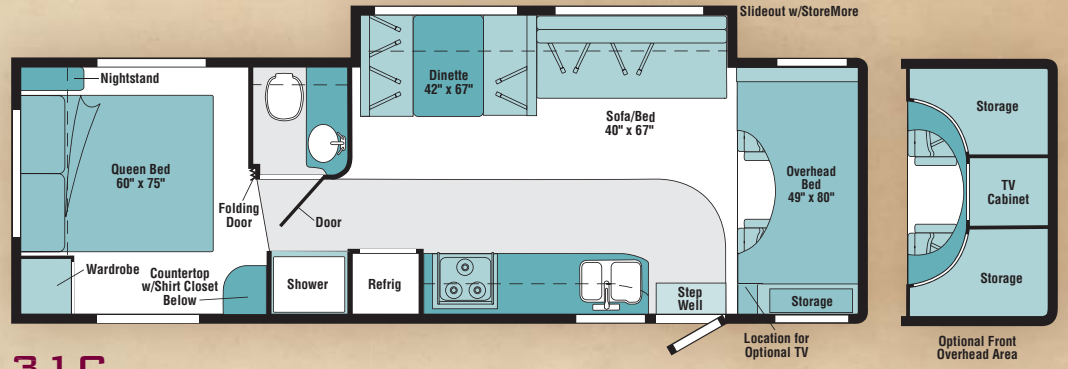


**WEB** **TRUELEVEL** Eliminate tank-level guesswork with our exclusive TrueLevel™ holding tank monitoring system. It incorporates detector cells that detect liquid levels from outside the tank. No probes means no more corrosion, just accurate readings time after time.

# 08 SPIRIT FLOORPLANS

Carpet
  Vinyl Floorcovering
 

 Seat Belts
 
*Note: Dimensions shown are for sleeping space only and may vary due to styling differences. Dashed lines denote overhead storage areas.*



# 08 SPIRIT SPECIFICATIONS

WEIGHTS & MEASURES	29B	31C	31H
Length	29'11" <sup>A</sup> / 30'10" <sup>B</sup>	31'5" <sup>A</sup> / 32'3" <sup>B</sup>	32'1" <sup>A</sup>
Exterior Height <sup>1</sup> w/A/C	11'5" <sup>A</sup> / 11'8" <sup>B</sup>	11'5" <sup>A</sup> / 11'8" <sup>B</sup>	11'5" <sup>A</sup>
Exterior Width <sup>2</sup>	8'5.5"	8'5.5"	8'5.5"
Exterior Storage <sup>3</sup> (cu. ft.)	59.6	93.0	83.3
Awning Length	14'	16'	16'
Interior Height	6'8"	6'8"	6'8"
Interior Width	8'0"	8'0"	8'0"
Freshwater Capacity w/Heater <sup>4</sup> (gal.)	38	42	42
Holding Tank Capacity - Black/Gray <sup>4</sup> (gal.)	30 / 39	35 / 28	27 / 38
LP Capacity <sup>5</sup> (gal.)	18	18	18
Fuel Capacity (gal.)	55	55	55
GCWR <sup>6</sup> (lbs.)	20,000 <sup>A</sup> / 17,600 <sup>B</sup>	20,000 <sup>A</sup> / 17,600 <sup>B</sup>	20,000 <sup>A</sup>
GVWR (lbs.)	14,050 <sup>A</sup> / 14,050 <sup>B</sup>	14,050 <sup>A</sup> / 14,050 <sup>B</sup>	14,050 <sup>A</sup>
GAWR - Front (lbs.)	4,600 <sup>A</sup> / 4,600 <sup>B</sup>	4,600 <sup>A</sup> / 4,600 <sup>B</sup>	4,600 <sup>A</sup>
GAWR - Rear (lbs.)	9,450 <sup>A</sup> / 9,450 <sup>B</sup>	9,450 <sup>A</sup> / 9,450 <sup>B</sup>	9,450 <sup>A</sup>
Wheelbase	190" <sup>A</sup> / 191" <sup>B</sup>	220" <sup>A</sup> / 221" <sup>B</sup>	215" <sup>A</sup>

AUTOMOTIVE/CHASSIS	29B	31C	31H
<b>A Ford® Chassis E450</b> – 6.8L SOHC Triton® V10 engine, 305-hp, automatic transmission, TorqShift™, 5-speed with tow/haul feature, 4-wheel ABS, 130-amp. alternator, dual air bags, <b>Trailer Hitch</b> <sup>6</sup> 5,000-lb. drawbar/350 lbs. maximum vertical tongue weight & wiring w/7-pin connector, <b>Wheel Liners</b> stainless steel	S	S	S
<b>B Chevrolet® Chassis<sup>7</sup></b> – 6.0L 6000 Vortec V8 engine, 300-hp, automatic transmission, 4-speed overdrive, 4-wheel ABS, 145-amp. alternator, dual air bags, <b>Trailer Hitch</b> <sup>6</sup> 3,500-lb. drawbar/350 lbs. maximum vertical tongue weight & wiring w/7-pin connector, <b>Wheel Liners</b> stainless steel	0	0	
<b>Air Springs</b> auxiliary rear, <b>Leveling Jacks</b> hydraulic, automatic (NA Chevrolet chassis), <b>Wheels</b> stylized aluminum	0	0	0

CAB AREA & DRIVER CONVENIENCES	29B	31C	31H
<b>Beverage Holder</b> , <b>Cab Seats</b> w/3-point adjustable seat belts, armrest, lumbar support, multiadjustable slide/recline, <b>Cigarette Lighter/12-Volt DC Powerpoint</b> , <b>Cruise Control</b> , <b>Curtain</b> cab divider, <b>Mirrors</b> exterior, manual adjust, <b>Power Cab Door Locks</b> driver, passenger & main entry, <b>Power Windows</b> , <b>Monitor System</b> rearview, cable ready, <b>Steering Wheel</b> tilt w/power-assist, <b>Trim Panels</b> driver & passenger doors	S	S	S
<b>Cab Seats (UltraLeather™)</b> , <b>Mirrors</b> exterior electric remote w/defrost, <b>Monitor System</b> rearview w/single camera, LCD monitor	0	0	0

ENTERTAINMENT	29B	31C	31H
<b>RV Radio® (Ford)</b> AM/FM stereo/CD w/weather band, speakers (4), iPod/MP3 input, remote controls (2) one handheld, one mounted on steering wheel, <b>Radio (Chevrolet)</b> AM/FM stereo/CD, <b>Radio Power Switch</b> main/auxiliary, <b>TV Enhancement Package</b> antenna (amplified), 12-volt DC powerpoint(s), interior jack(s), coax wiring, cable input, <b>Telephone Input</b> modular connector, interior jack	S	S	S
<b>Entertainment Center (Exterior)</b> AM/FM radio, CD player w/remote, DC receptacle, AC duplex receptacle, TV jack, radio antenna, removable TV table, speakers (2), lockable compartment, <b>Entertainment Center (Interior Front Overhead)</b> TV AC 27" w/remote, Sony®, Home Theater Sound System with AM/FM receiver, DVD player, amplifier, speakers (5), subwoofer, video selection system, accent rope lighting above cabinet, <b>Satellite Dish Antenna</b> RV digital, elevation sensing unit, manual, <b>Sirius® Satellite Radio System</b> (available w/Ford chassis, NA w/Chevrolet chassis), iPod interface connector, antenna, receiver, 6-month complimentary subscription, <b>TV 19" LCD (Front Bunk Area) Stereo System</b> with AM/FM radio, CD/DVD player, alarm clock, input jack (plays MP3), headphone jack	0	0	0

INTERIOR	29B	31C	31H
<b>Bunk</b> front overhead w/mattress, privacy curtain, storage cabinet, bunk ladder, <b>Ceiling</b> fabric, <b>Countertops</b> thermo-formed laminate w/radius edge, <b>Light (Shower)</b> w/wall switch, <b>Lights (Ceiling)</b> incandescent w/wall switches, <b>Light</b> decorative dining, <b>Roof Vent</b> nonpowered (front overhead bunk), powered (bath), <b>Roof Vent</b> nonpowered, bedroom, <b>Shades</b> pleated (lounge, dinette & bedroom), mini blinds (bath & galley)	S	S	S
<b>Interior Upgrade Package</b> accent rope lighting above cabinets in galley or lounge area & bedroom, Regal Burl dash & beverage tray appliqué, cab carpet floor mats (Ford), single-control lavatory faucet, sink covers, decorative picture, throw pillows, pleated day/night blinds in lounge, dinette & bedroom, range backsplash, refrigerator insert (Titanium Touch™ stainless finish), <b>Roof Vent</b> powered ventilator fan, front overhead bunk or lounge, <b>Windows</b> dual-glazed, thermo-insulated	0	0	0
<b>Roof Vent</b> nonpowered, lounge	S		S

FURNITURE	29B	31C	31H
<b>Dinette</b> w/access to storage below, <b>Sofa</b> w/access to storage below	S	S	S

<b>GALLEY</b>	29B	31C	31H
<b>Faucet</b> single-control, Moen® <b>Range</b> 3-burner w/ microwave/convection oven, Apollo® <b>Range Hood</b> vented w/light & fan, stainless steel, <b>Refrigerator/Freezer</b> double-door, Norcold®	S	S	S
<b>Countertop</b> flip-up extension	S		S
<b>Pantry</b>			S
<b>Water Filtration System</b> cold water	0	0	0

<b>BATH</b>	29B	31C	31H
<b>Cabinet</b> lavatory, <b>Cabinet</b> medicine, <b>Clothes Rod</b> removable, <b>Faucet (Lavatory)</b> dual-control, <b>Faucet (Tub and/or Shower)</b> dual-control w/flexible showerhead, <b>Shower Door</b> retractable, <b>Skylight</b>	S	S	S
<b>Shower Door</b> textured glass	0	0	

<b>BEDROOM</b>	29B	31C	31H
<b>Bed</b> Serta®, queen		S	S
<b>Bed</b> Serta, queen w/underbed storage	S		
<b>Bedsread</b> pillow shams, pillows	S	S	S

<b>EXTERIOR</b>	29B	31C	31H
<b>Awning Rails</b> w/rain gutters, <b>Door</b> entrance w/ separate screen door, deadbolt lock, <b>Entrance Door Step</b> manual, <b>Ladder</b> , <b>Light</b> porch w/interior switch, <b>Mudflaps</b> rear, <b>Receptacle</b> AC duplex, <b>Running Boards</b> painted steel, <b>Sidewall Skin</b> 1-piece smooth fiberglass, <b>Storage Compartments</b> w/trunk liner, KeyOne™ System	S	S	S
<b>Awning</b> patio, vinyl, <b>Entrance Door Step</b> electric w/ doorjamb switch	0	0	0
<b>Trunk</b> rear, backwall door, access door on the right, KeyOne System, storage bin covers (one cover w/folding table legs), drain hole		S	S

<b>SYSTEMS</b>	29B	31C	31H
<b>Heating &amp; A/C – Air Conditioner (Roof)</b> 14,800 BTU, ceiling-ducted w/wall thermostat, <b>Furnace</b> 30,000 BTU, low-profile	S	S	S
<b>A/C Heat Pump</b> w/roof A/C	0	0	0

<b>SYSTEMS</b>	29B	31C	31H
<b>ELECTRICAL – Auxiliary Start Circuit, Battery (Coach) Group 24 deep-cycle, Battery (Coach) Disconnect System, Dual Battery Charge Control (Automatic), Electrical Distribution System</b> DC fuses, AC breakers, 45-amp. electronic converter/charger, <b>Generator Prep Kit, Monitor Panel</b> wall-mounted, battery condition gauge, generator hourmeter gauge, generator start/stop switch, holding tank levels, LP tank level, water heater lights, water heater switch, water pump switch, water tank level, <b>Power Cord</b> 30-amp., 25'	S	S	S
<b>Batteries (Coach) (2) Group 24 deep-cycle, Generator</b> 4,000-watt, Cummins Onan® MicroQuiet™ gas, <b>Inverter</b> DC/AC, 300-watt (NA w/bunk)	0	0	0
<b>PLUMBING/LP – Drain</b> 1" water tank, <b>Dump Valve</b> manual, <b>Sewer Hose</b> 10,' stores in drain valve compartment, <b>Tank</b> LP, permanent mount w/gauge, <b>TrueLevel™ Holding Tank Monitoring System, Water Heater</b> 6-gallon, electronic ignition, LP gas, <b>Water Hookup</b> city, <b>Water Pump</b> demand, <b>Water System Winterization Package</b> water heater bypass valve & siphon tube, <b>Water Tank Fill</b> w/locking door	S	S	S
<b>Drainage System</b> <sup>7</sup> heated, electric, one heat pad per tank, pipe wraps, lighted on/off switch next to monitor panel (pre-wired for Canada), <b>Wash Station</b> exterior w/ lighted pump switch, <b>Water Heater</b> 6-gallon, electronic ignition/110V, LP gas w/motoraid, rear auto heater & energy management system	0	0	0

<b>SAFETY</b>	29B	31C	31H
<b>Airbags</b> driver & passenger, <b>Assist Handle</b> exterior, <b>Assist Bar</b> interior, <b>Brakelamp</b> high-mount, <b>Bumpers</b> front & rear, <b>Child Seat Tether Anchor</b> dinette, <b>Detectors/Alarms</b> LP leak, smoke, carbon monoxide, <b>Fire Extinguisher</b> 10 BC, <b>Ground Fault Interrupter, Light(s)</b> courtesy w/wall switch(es), <b>Seat Belts</b> cab, 3-point, <b>Seat Belts</b> lap (in selected areas), <b>Slideroom Master Lock Switch</b> key activated, <b>Window</b> escape	S	S	S

<b>WARRANTY</b> <sup>8</sup>	29B	31C	31H
<b>12-month/15,000-mile basic warranty,</b> <sup>9</sup> <b>36-month/36,000-mile limited warranty on structure,</b> <sup>9</sup> <b>10-year limited parts &amp; labor warranty on roof skin</b> <sup>9</sup>	S	S	S

- The height of each model is measured to the top of the tallest standard feature and is based on the curb weight of a typically equipped unit. The actual height of your vehicle may vary by several inches depending on chassis or equipment variations. Please contact your dealer for further information.
  - Spirit floorplans feature a wide-body design - over 96". In making your purchase decision, you should be aware that some states restrict access on some or all state roads to 96" in body width. Before making your purchase decision, you should confirm the road usage laws in the states of interest to you.
  - The load capacity of your motor home is designated by weight, not by volume, so you cannot necessarily use all available space when loading your motor home.
  - Capacities are based on measurements prior to tank installation. Slight capacity variations can result due to installation applications.
  - Capacities shown are tank manufacturer's listed water capacity (W.C.). Actual filled LP capacity is 80% of listing due to overfilling prevention device on tank.
  - Actual towing capacity is dependent on your particular loading and towing circumstances which includes the GVWR, GAWR, and GCWR as well as adequate trailer brakes. Please refer to the Operator's Manual of your vehicle for further towing information.
  - Not Available in Canada.
  - See separate chassis warranty.
  - See your dealer for complete warranty information.
- NA Not Available  
S Standard  
O Optional

Not all items available in combination. See dealer for details.

Winnebago Industries® continuing program of product improvement makes specifications, equipment, model availability, and prices subject to change without notice. Comparisons to other motor homes are based on the most recent information available at printing.

## STANDARD GRAPHICS PACKAGE



Dark Charcoal/Brown/Pewter/Teal

## AVAILABLE DELUXE GRAPHICS PACKAGE

*Includes front fiberglass running boards and wheel lips.*



Bright Platinum Metallic



Metallic Gold

Welcome to Winnebago Industries, Inc.  
<http://www.winnebagoind.com/>

PRODUCTS RESOURCES COMPANY CLUBS/EVENTS CONTACT DEALERS ONLY WEB Select a Key Feature

Select a category from above.

Popular Links

- Winnebago RV's
- Itasca RV's
- Key Features
- Dealer Locator

WINNEBAGO INDUSTRIES' FEATURED PRODUCTS

**titaniumTOUCH**  
Refreshers you won't find anywhere else.

**TRUEAIR**  
Cooks 40% Faster,  
White 50% Quicker!

**SIRIUS**  
Available Sirius Satellite Radio.

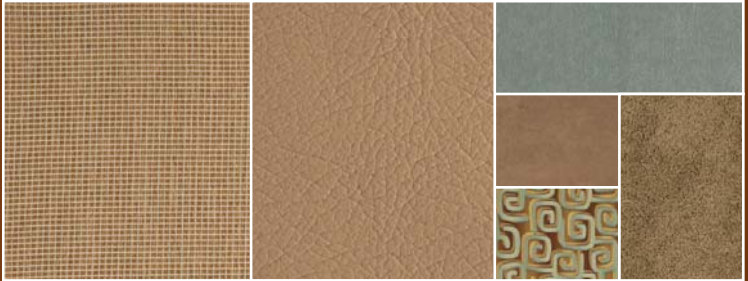
**WINNEBAGOIND.COM** Visit us on the web for more info on all of our motor homes, the latest product updates and a host of web-exclusive content.



## INTERIOR DECOR

Choose from three fabric selections and two cabinet wood choices with hidden hinges.

MAIN	ULTRA-LEATHER	BEDSPREAD	
		ACCENT	CARPET
		ACCENT	



Winter Surf w/available Timber UltraLeather™



Rain Storm w/available Papyrus UltraLeather



Boardwalk w/available Timber UltraLeather



Honey Cherry



Washed Maple

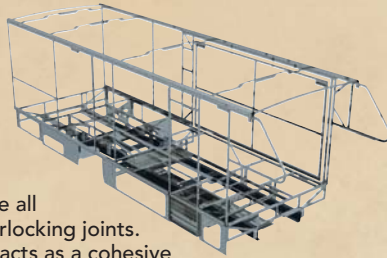


**BUILT BY WINNEBAGO INDUSTRIES.  
BUILT TO LAST.**

Itasca motor homes are built by Winnebago Industries, the company that defined motor homes. The company that built its reputation on quality construction. The company that transformed the motor home concept into a way of life.

Today, Winnebago Industries brings that reputation for quality and its 49-year history of motor home innovation to the design and construction of every motor home. It's all a part of SuperStructure<sup>®</sup>, our exclusive system of proprietary structural components that instills each motor home with improved strength and durability.

**SOLID FOUNDATION** Steel and aluminum truss work provides a solid, flat foundation for the floor and sidewalls. Winnebago Industries engineers also take special care to distribute the weight of components to ensure proper handling and stability.



**INTERLOCKING JOINTS** The floor, sidewalls and roof are all integrally connected using interlocking joints. This creates a coach body that acts as a cohesive unit for improved strength and durability.



**E-COATING** Winnebago Industries employs an exclusive 12-stage automotive-style dip tank process to apply an advanced electrodeposition coating on critical steel components for superior corrosion protection.



**WEB**

**THERMO-PANEL<sup>®</sup> SIDEWALLS** Invented by Winnebago Industries, Thermo-Panel construction combines a fiberglass panel, high-density, block-foam insulation and aluminum support structures to create some of the most durable, lightweight sidewalls in the industry.

**ATTENTION TO DETAIL** Whether it's sending every coach through a high-pressure water tunnel to check for leaks or labeling each individual wire and bar-coding parts to save time and frustration during service, Winnebago Industries considers every detail to ensure your Itasca motor home provides you with years of pleasure.

**STRONG AS STEEL** Appliances are secured directly to embedded steel plates for added safety.



1-year-old Itasca fiberglass roof



1-year-old competitor's rubber roof

**FIBERGLASS ROOF** The Spirit features a crowned, one-piece fiberglass roof, backed with a 10-year limited parts-and-labor roof skin warranty. Fiberglass offers superior strength, attractiveness and durability over the rubber roofs found on many competitive models which can chalk, streak and degrade over time. Fiberglass also provides increased puncture and tear resistance.



**TAKE A TOUR** We're proud of our process, state-of-the-art facilities and the people who make Winnebago Industries number one. We invite you to visit our factory in Forest City, Iowa, for a first-hand look at the dedication and technology behind every motor home we build.



**RECOGNIZED QUALITY** The Recreation Vehicle Dealer Association annually rates RV manufacturers and awards the Quality Circle award to manufacturers who provide exceptional products, service and support. Winnebago Industries is proud to be the only manufacturer to receive this award every year since its inception.



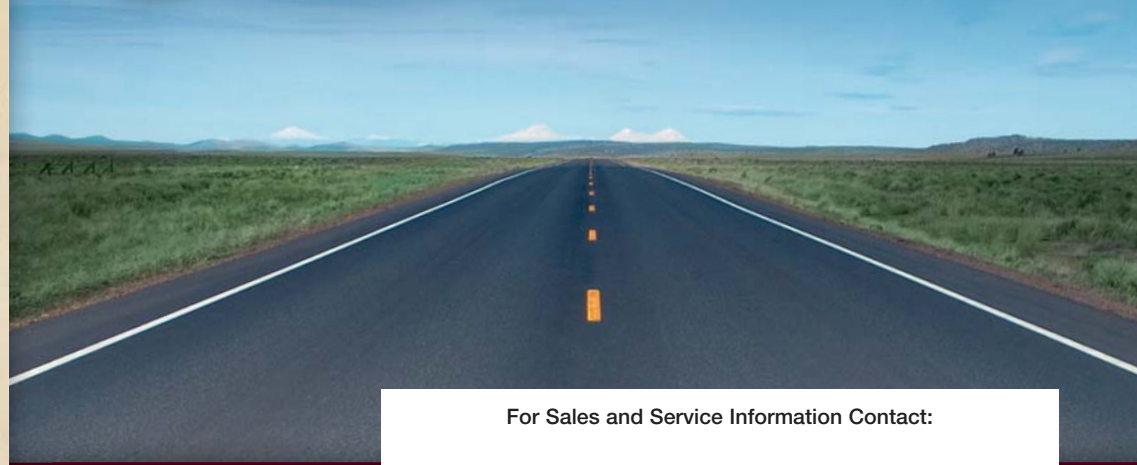
**COMMITTED TO SERVICE** We back our motor homes with the industry's best service after the sale.

- 12-month/15,000-mile basic limited warranty
- 36-month/36,000-mile warranty on structure
- Standard 10-year limited parts-and-labor roof skin warranty
- Complimentary 24-hour roadside assistance program
- TripSaver Fast Track Parts. TripSaver guarantees that in-stock warranty parts ship directly to your dealer within 24 hours.
- National dealer service network



**WIT CLUB** Itasca owners are like family. Joining the Winnebago-Itasca Travelers is a great way to meet and travel with other Itasca enthusiasts. Members enjoy:

- Caravans and rallies
- Local and state group activities
- RV travel benefits



For Sales and Service Information Contact:



Built proudly by



NYSE listing: WGO

©2007 Winnebago Industries, Inc.

Printed in USA

Seat belts are your most important hookup. Always buckle up.